



Connecticut Commuter Rail Council

May 19, 2021

1. Update on Feasibility Study Fast Track Danbury Line to Grand Central Terminal (Jon Foster)



- **The New York Metropolitan Transportation Council has allocated \$1 million for the study.**
- **The line, which runs from Beacon, NY to Danbury is mostly inactive.**
- **The study is expected to take up to two years.**
- **The money for the feasibility study comes from an \$800,000 federal grant, and a \$200,000 contribution from Putnam County.**
- **The county will be working with the Metropolitan Transportation Authority and the City of Danbury on the study, and the county needs a project manager to represent the interests of Putnam, he told Montgomery.**
- **Albano said the \$15,000 stipend was pro-rated for \$5,000 for this year for the study, which was approved by the MTA in the fall. The stipend, which will be the full \$15,000 in 2020, will be spent on Tamagna's continuing work on the study, as well as another \$45,000 spent this year for in-kind services related to the study.**
- **County Commissioner of Planning, Development and Public Transportation Statement.**



Connecticut Commuter Rail Council

May 19, 2021

2. Future Danbury Line Improvements (Yure Kuljis)



Merritt 7 Station Scope

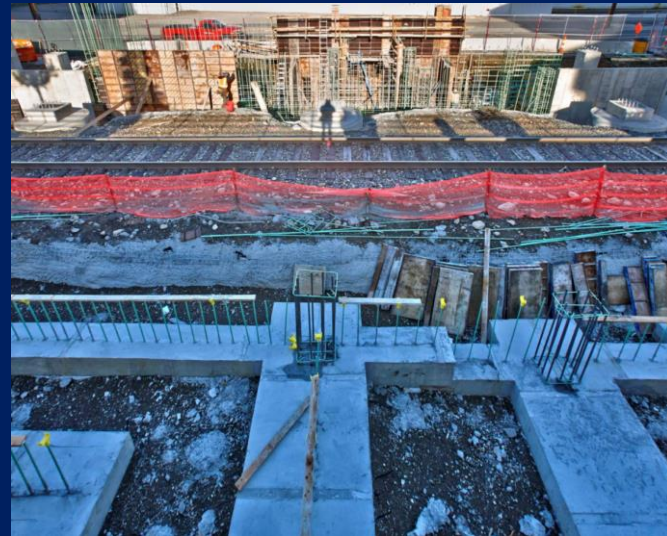
- High Level Platform
- Tower Structures
- Elevators / Stairs
- Pedestrian Overpass
- Drainage System
- Improvements to Parking Lot and Glover Avenue
- Passenger Information Display System
- PA / Security System
- Station Amenities
- Canopy
- Bike Shelters



Merritt 7 Station Completed Work

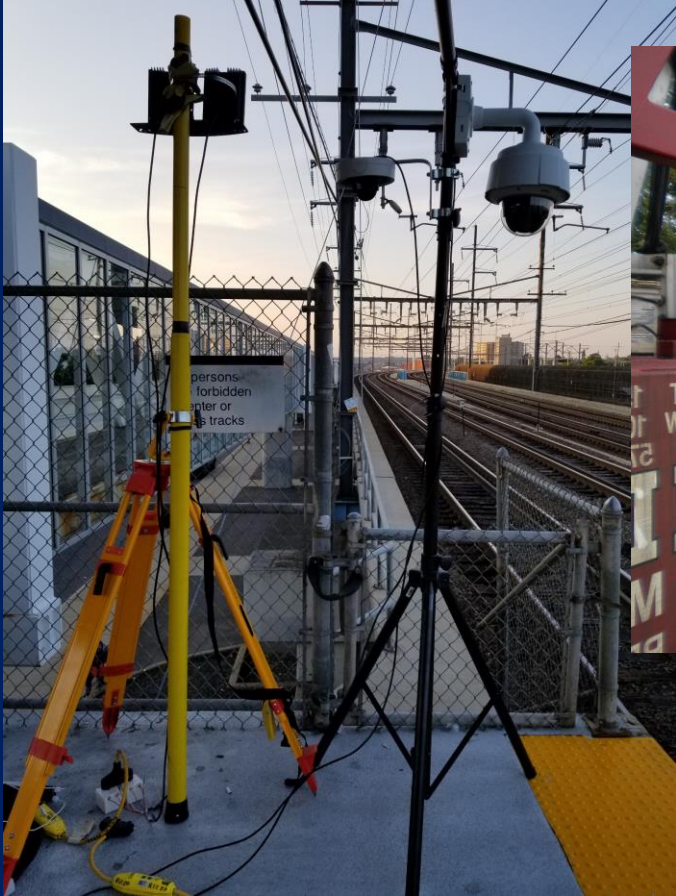
- Prepared West Tower Stair Walls
- Prepared West Tower Walls
- Backfilled Ramp
- Removed Soil Nail West Tower
- Prepared/formed East Tower Footings
- Drainage at Glover Avenue

Completion Date
Fall 2022



Other Improvements:

- Upgrade to Network Infrastructure and Installation of Security System (Under Design)
- Track Work and Maintenance Work (On-going)





Connecticut Commuter Rail Council

May 19, 2021

3. Service and Fare Equity Analysis (Jon Foster)



Pre-COVID and COVID Rail Service

Title VI Major Service Changes on Trains

New Haven Line	M-F	Sat	Sun	Week Total
Pre-Covid	254	141	127	1538
Covid	129	83	83	811
New Haven Line Reduction	49.2%	41.1%	34.6%	47.3%
Danbury Line	M-F	Sat	Sun	Week Total
Pre-Covid	28	12	12	164
Covid	16	12	12	104
Danbury Line Reduction	42.9%	0.0%	0.0%	36.6%
Shore Line East	M-F	Sat	Sun	Week Total
Pre-Covid	36	21	21	222
Covid	16	16	16	112
Shore Line East Reduction	55.6%	23.8%	23.8%	49.5%

Major Service Change Analysis- Rail

The following changes triggered the Major Service Change threshold:

- New Haven Line: Service all days of the week
- Danbury Line: Weekday Service and Weekday Eastbound & Westbound Service Spans
- Shore Line East: Weekday Service, and Weekend Westbound Service Spans

Rail Threshold Major Service Changes			
	New Haven Line	Danbury Line	Shore Line East
M-F	49.2%	42.9%	55.6%
Sat	41.1%	Did not meet threshold	Did not meet threshold
Sun	34.6%	Did not meet threshold	Did not meet threshold

Rail Service SAFE Findings

New Haven Line

A disproportionate burden was identified as a result of a reduction in State Street Station Stops operated by Metro-North.

Shore Line East

On Shore Line East a disproportionate burden was identified as a result of reduced weekend westbound service headways to New Haven in addition to single platforms at the Clinton and Madison Stations..

Danbury Line

No disparate impacts or disproportionate burdens were identified

Rail Service SAFE Mitigation/Justification

New Haven Line

The finding at the State Street Station stop operated by Metro-North is mitigated with connecting rail services offered by both Shore Line East and CTrail Hartford Line.

Shore Line East

The reduced weekend westbound service is in response to current ridership levels. The Department will continue to monitor ridership closely and make service adjustments as ridership returns.



Proposed Rail Fare Changes and SAFE Findings

COVID-19 Eliminated Peak Fare: Due to the weekend schedule being operated daily in response to the pandemic, peak fares for trips between Connecticut stations and Manhattan were suspended on the New Haven Line as well as New Canaan, Danbury, and Waterbury Lines.

The Mail & Ride Program: Provides a 2% discount for people who purchase monthly Metro-North passes and monthly MTA passes by mail, is proposed for elimination in order to promote the use of mobile no-touch fare media.

The SAFE analysis showed no disparate impacts or disproportionate burdens for either of these fare changes.

CTDOT Virtual ZOOM Public Hearing Schedule

Hearing Dates

- Tuesday, May 18th 6pm-9pm
- Wednesday May 19th 6pm-9pm
- Thursday May 20th 12pm-3pm
- Tuesday May 25th 12pm-3pm

Comments regarding the proposed service and fare changes and Service and Fare Equity Analysis will be accepted at the hearings and by email, phone, mail as well as participating libraries until **May 28, 2021.**

For more information please visit:

www.ct.gov/dot/proposedtransitchanges



Connecticut Commuter Rail Council

May 19, 2021

4. Update on CGA Rail Bills out of Committee (Jon Foster)



Legislative Bills Under Review

Bill #	Description	Estimate
<u>HB-5423</u>	AN ACT CONCERNING THE EXPANSION OF PASSENGER TRAIN AND GROUND TRANSPORTATION SERVICES IN EASTERN CONNECTICUT. 05-03 APP - Joint Favorable	\$1.0M
<u>SB-576</u>	AN ACT CONCERNING THE EXPANSION OF PASSENGER RAIL SERVICE ON THE WATERBURY BRANCH OF THE METRO-NORTH COMMUTER RAILROAD. 05-03 APP - Joint Favorable	Funding in FY22/23 Budget



Questions or Comments

