



Connecticut Commuter Rail Council

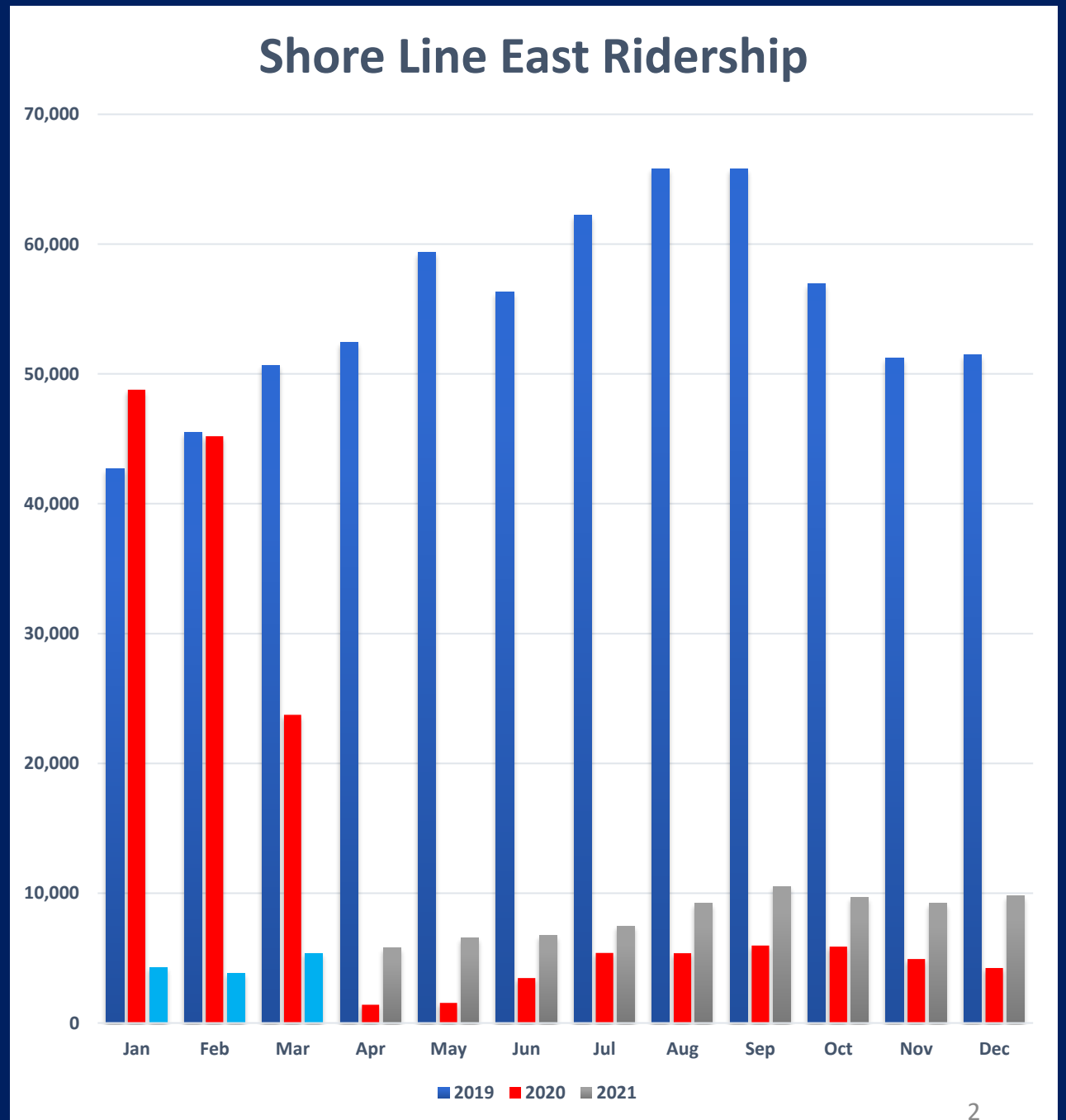
April 21, 2021

1. SLE Service Update and Future Plans (Jon Foster)



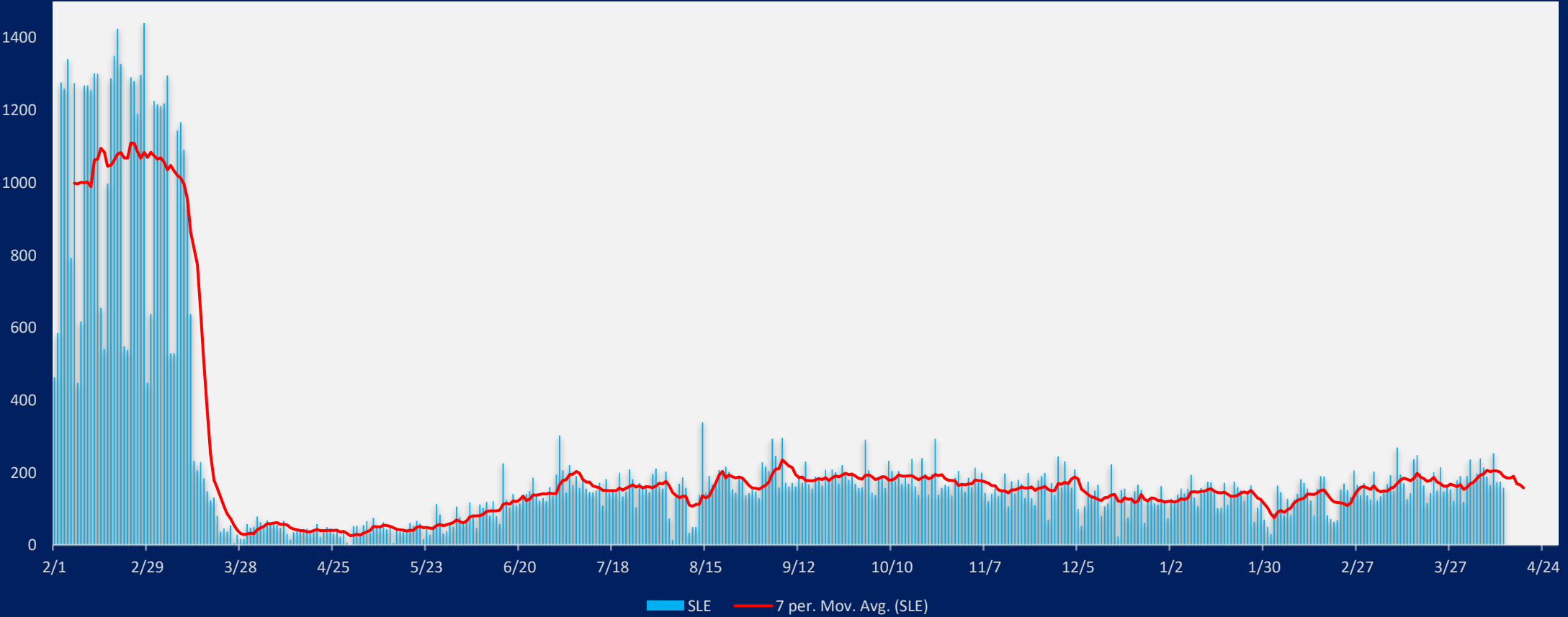
SHORE LINE EAST RIDERSHIP BY MONTH WITH PERCENTAGE CHANGE FROM 2019

YEAR	2019	2020	2021	Change
JAN	42,677	48,797	4,289	-90.0%
FEB	45,478	45,193	3,866	-91.5%
MAR	50,684	23,740	5,380	-89.4%
APR	52,433	1,399	5,768	-89.0%
MAY	59,371	1,544	6,531	-89.0%
JUN	56,310	3,463	6,757	-88.0%
JUL	62,203	5,387	7,464	-88.0%
AUG	65,828	5,371	9,216	-86.0%
SEP	65,808	5,962	10,529	-84.0%
OCT	56,966	5,873	9,684	-83.0%
NOV	51,238	4,919	9,223	-82.0%
DEC	51,481	4,223	9,781	-81.0%
TOTAL	660,477	155,871	88,226	-86.6%



Shore Line East Daily Ridership since 2/1/2020

With 7 Day Rolling Average



Shore Line East Service Changes from Covid

- Overall Shore Line East train service decreased by 49.5%
- Overall Shore Line East ridership decreased by 90%
- CTDOT will closely monitor Shore Line East ridership and will evaluate restoring incremental added train service as ridership demand warrants.

Daily Trains	M-F	Sat	Sun	Week Total
Before Covid	36	21	21	222
After Covid	16	16	16	112
Change	-55.6%	-23.8%	-23.8%	-49.5%



Connecticut Commuter Rail Council

April 21, 2021

2. SLE Fleet Procurement Plan (Marci Petterson)





Connecticut Commuter Rail Council

April 21, 2021

3. SLE M8 Testing (Marci Petterson)





Connecticut Commuter Rail Council

April 21, 2021

4. SLE Station Update (Clinton / Madison) (Yure Kuljis)



Clinton Station Scope

- High Level Platforms
- Tower Structures
- Elevators / Stairs
- Pedestrian Overpass
- Drainage System
- Improvements to Parking Lots
- Passenger Information Display System
- PA / Security System
- Station Amenities
- Canopies
- Bike Shelters
- Generator



Clinton Station Substantial Completion

- High Level Platforms
- Tower Structures
- Elevators / Stairs
- Pedestrian Overpass
- Drainage System
- Improvements to Parking Lots
- Passenger Information Display System
- PA / Security System
- Station Amenities
- Canopies



Clinton Station

Current Activities

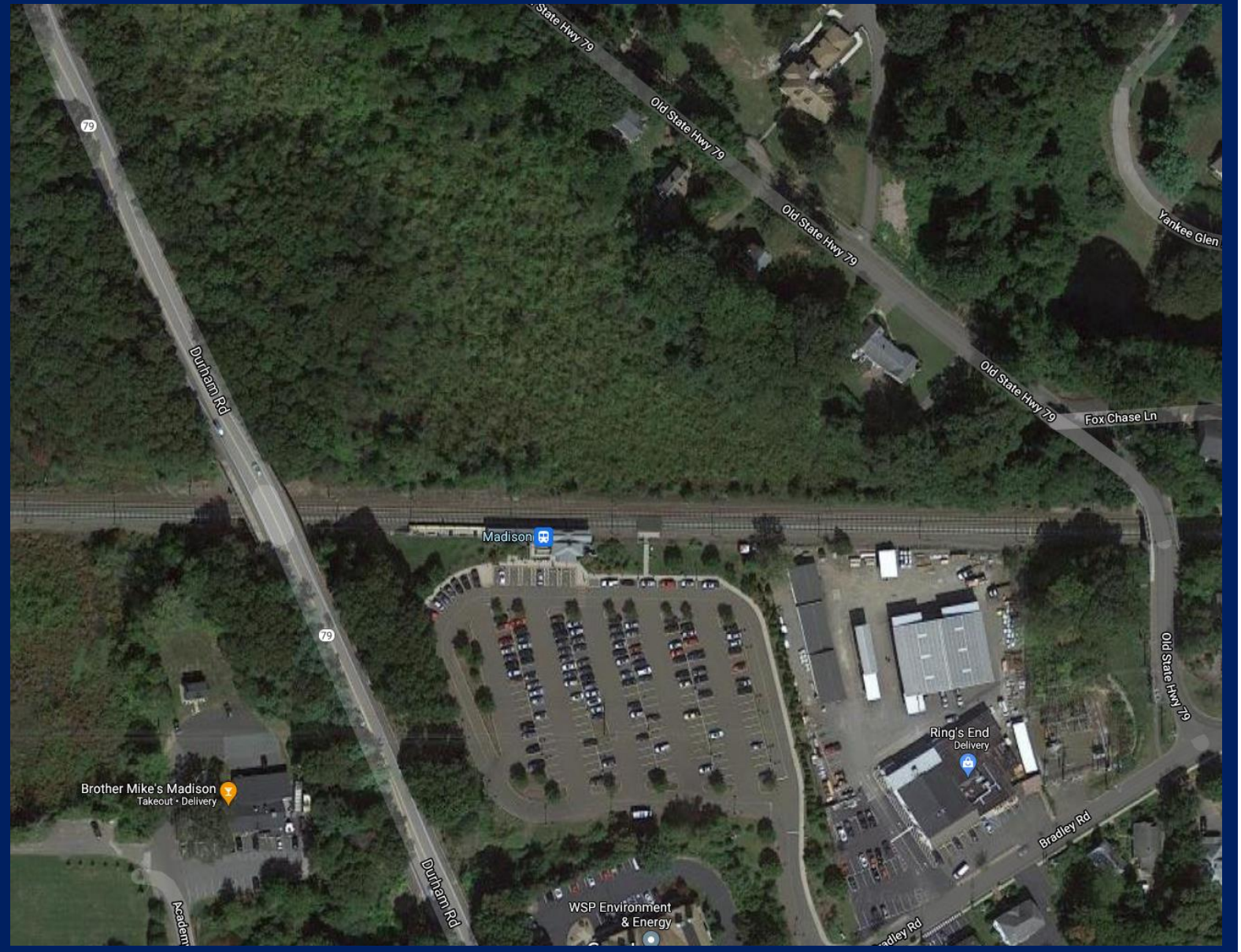
- Installation of concrete pads for transformer
- Generator
- Gas meter
- Automatic Transfer Switch
- Electric enclosure
- Galvanized bollards in South Site
- Fold up edge on North Platform
- Louver fence at equipment pad

Completion Date
December 2021



Madison Station

- Future Station Improvements
- Location (Wetland Area) and Construction Impacts
- Environmental Concerns
- Options





Questions or Comments

